

MONTHLY MEMBERSHIP PROGRESS REPORT

District 316 H

Results as of: 6/30/2020

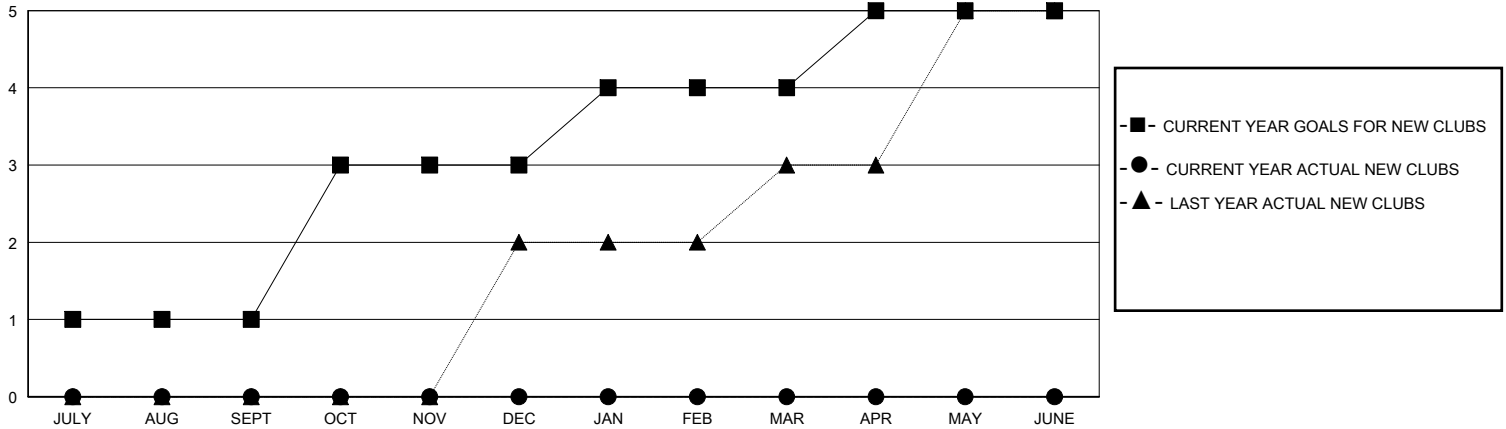
GMT:

LOCATION INDIA

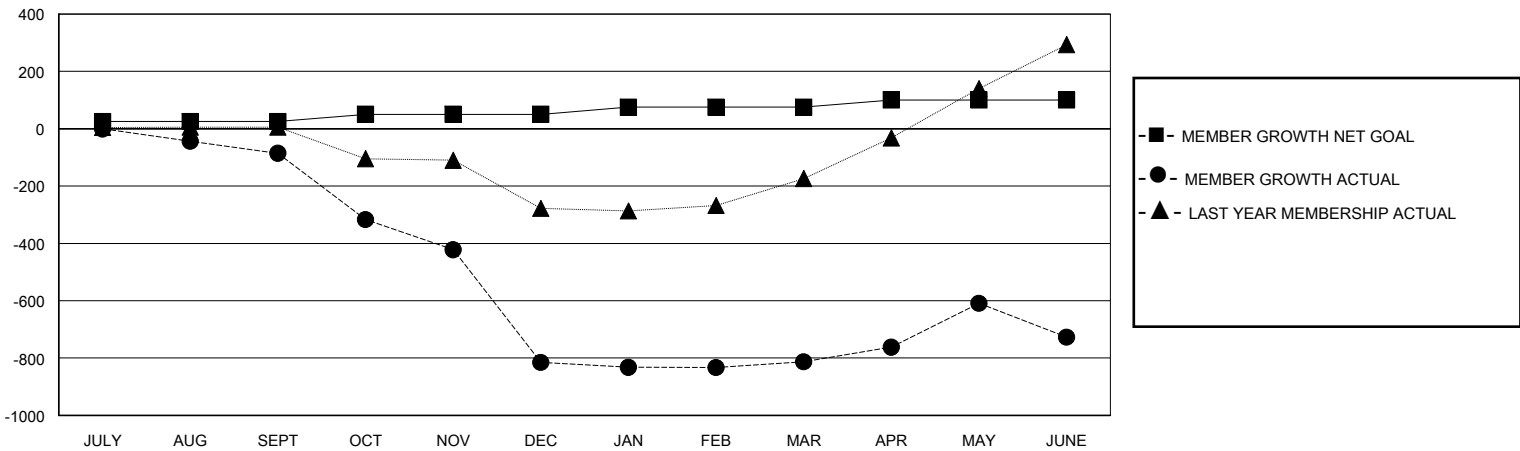
GMT CA

| Clubs | | | | Members | | | |
|-----------------------|---------------|-----------|---------------|-----------------------|------------------------|----------------------|----------------------------------------------|
| RESULTS FOR 2019-2020 | | | | RESULTS FOR 2019-2020 | | | |
| QUARTER | NEW CLUB GOAL | NEW CLUBS | DROPPED CLUBS | QUARTER | MEMBER GROWTH NET GOAL | MEMBER GROWTH ACTUAL | DROPPED MEMBERS ACTUAL (including transfers) |
| JULY/AUG/SEPT | 1 | 0 | 3 | JULY/AUG/SEPT | 25 | 19 | 100 |
| OCT/NOV/DEC | 2 | 0 | 9 | OCT/NOV/DEC | 25 | 66 | 794 |
| JAN/FEB/MAR | 1 | 0 | 1 | JAN/FEB/MAR | 25 | 33 | 27 |
| APR/MAY/JUNE | 1 | 0 | 0 | APR/MAY/JUNE | 25 | 242 | 147 |

GOALS AND ACTUAL NEW CLUBS CUMULATIVE



GOALS AND ACTUAL MEMBERS CUMULATIVE



| | | |
|------------------------|-----------------------------------------------------------|------------------------------------|
| DROPPED CLUBS: 13 | 16 CLUBS OF 57 ADDED 1 OR MORE NEW MEMBERS | GENDER DISTRIBUTION |
| | | MALE 1,375 (78.17%) |
| | | FEMALE 384 (21.83%) |
| DROPPED MEMBERS | CLICK HERE FOR CUMULATIVE MEMBERSHIP DATA | TOTAL FAMILY UNIT MEMBERS 76 |
| DECEASED 11 | | FAMILY MEMBERS PAYING HALF DUES 40 |
| CLUB CANCELLED 749 | | |
| OTHER 308 | | |
| TOTAL 1,068 | | |